

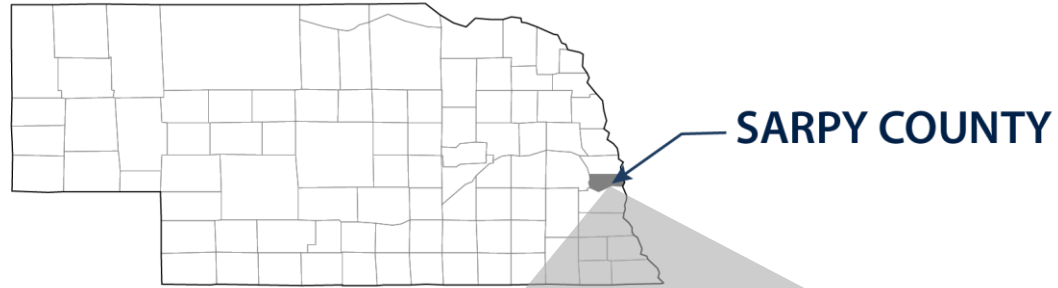
# Sarpy County and Cities Wastewater Agency

Project Update – May 2021

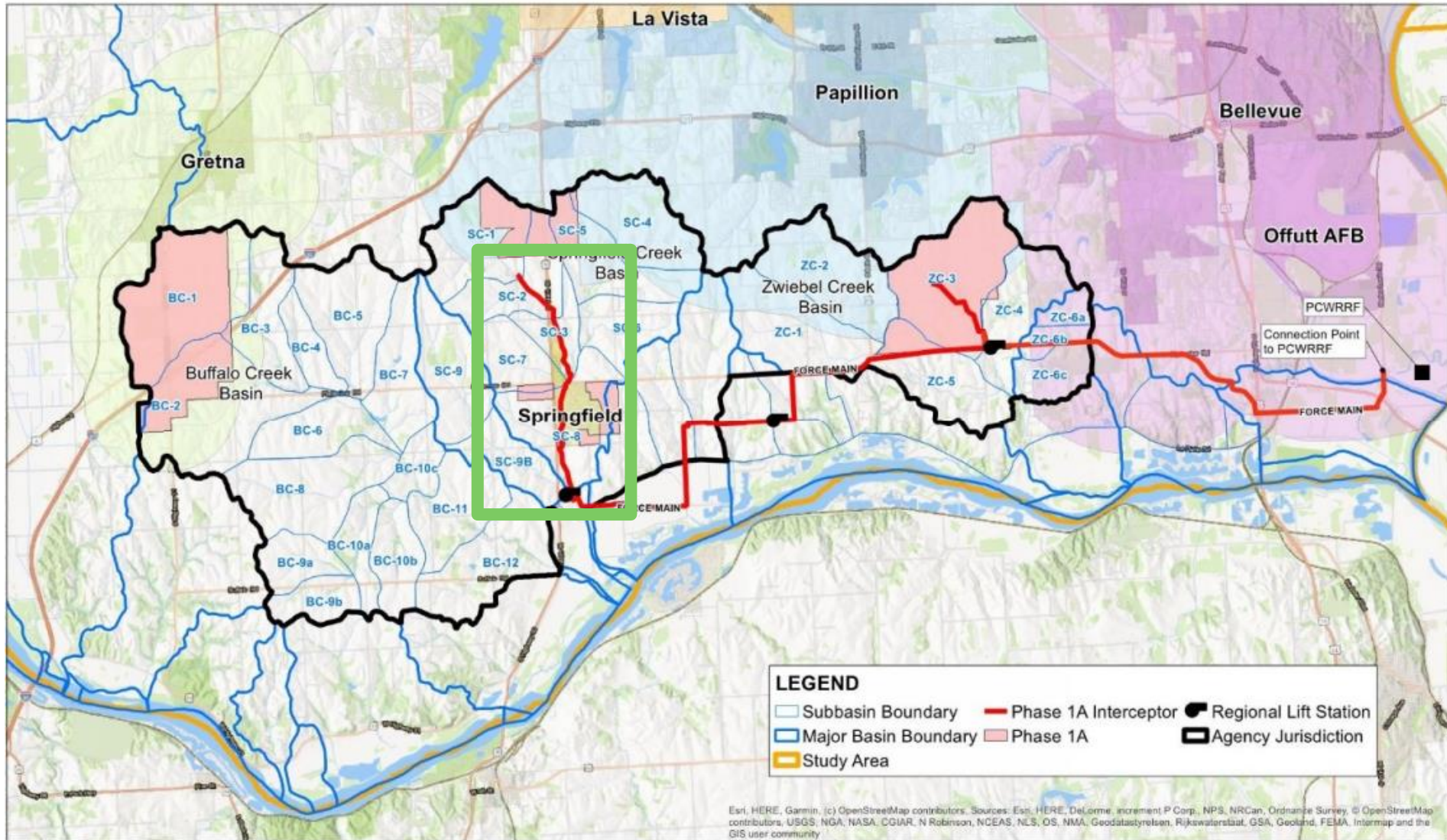
Springfield Creek Interceptor Sewer, CWB Sewer, and CWB  
Equalization Basin



# Project Location - Overall



# Project Location - Phase 1A



# Project Overview - Quantities

- The Springfield Creek Interceptor Sewer, CWB Sewer, and CWB Equalization Basin serve the Springfield Creek Basin.
- Sewer Improvements
  - 17,300 Linear Feet of Cooling Water Blowdown Gravity/Force Main – 24-inch
  - 6,500 Linear Feet of Springfield Creek Interceptor Gravity Sewer – 24-inch
  - 11,000 Linear Feet of Springfield Creek Interceptor Gravity Sewer – 36-inch
- Site Improvements
  - 4.5 AC Bentonite Lined EQ Basin
  - 2,000 Linear Foot Perimeter 6' Earthen Berm
  - Various Outfall CIP Concrete Structures & Buried Sewer Piping

# Project Overview - Construction

- 10' Offset Parallel Sewers in Same Construction Corridor.
- Construction Includes (Approximately):
  - Multiple Creek Crossings
  - Trenchless Sewer Construction
    - 670 Linear Feet Microtunnel
    - 800 Linear Feet Pilot Tube Auger Bore
  - Bentonite Lined EQ Basin
    - Grading & Earthwork
    - Flow Control & Metering Structures
    - Outfall Sewer
  - SRF Funded
    - Davis Bacon & AIS Requirements

# Project Schedule



**Mid-July 2021**  
Approximate Bid Advertisement



**Construction  
Cost  
Estimate:**  
\$15M-\$25M

# Permitting\*

## Anticipated Owner Obtained Permits

- NPDES Discharge Permit
- 404 Permit
- SWPPP Permit
- Grading Permit
- NDOT Crossing Permit
- County Permits
- Floodplain Development

## Anticipated Contractor Obtained Permits

- Dewatering Permit
- Stormwater Permit
- Hydrostatic Discharge Permit
- Construction Permit (Springfield)

# Key Elements - Contractor Q&A

- Parallel Sanitary Interceptor & Cooling Water Blowdown Line
- Geotechnical Elements
  - High Groundwater Table
  - Dewatering
  - Poor Soils – Haul In/Haul Out
- Sewer Pipe
  - PVC, Lined RCP, CCFRPMP, DIP
  - Depths up to approximately 35'
- Construction Access, Easements, & LOC
  - Property Acquisition Underway
  - 120' Easement/LOC Extents
- Trenchless Installation
  - Microtunnel
  - Pilot Tube Auger Bore
- Springfield Creek Encroachment & Asset Protection



# Key Elements - Contractor Q&A

- ROW/Schedule issues
  - Sarpy Fairgrounds Ag Society Schedule Restrictions
  - Stakeholder/Event Phasing
- SRF Project Impacts
- Stakeholders & Coordination
  - Wastewater Agency
  - City of Springfield
  - Ag Society
  - Sarpy County
  - NDOT
  - NRD
- Seasonal Constraints/Phasing Impacts

# Contacts



# Contact Information

## Engineer: HDR

- Project Manager
  - Rodney Kirkland
  - Rodney.Kirkland@hdrinc.com
  - 402.742.2901
- Project Engineer
  - Sean Bell
  - Sean.Bell@hdrinc.com
  - 402.399.4834

## Owner: Sarpy County and Cities Wastewater Agency

- Agency Administrator
  - Dan Hoins
  - dhoins@sarpy.com
  - (402) 593-2347
- Agency Secretary
  - Lisa Haire
  - lhaire@sarpy.com
  - (402) 593-1565

Sarpy County and Cities Wastewater Agency Website:  
<https://www.sarpy.gov/407/Wastewater-Agency>

