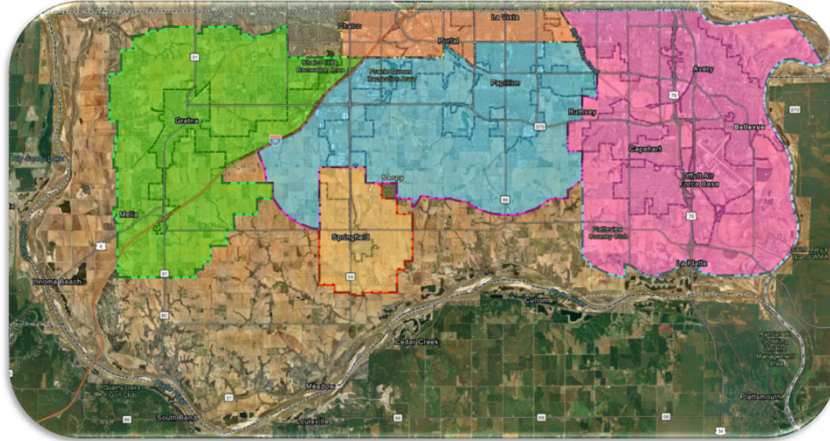


Update on ARPA Funds

September 15, 2022



Bill Conley, Sarpy County CFO

1

1



ARPA Process

Formed ARPA Task Force	X
Adopted GFOA Guiding Principles: <ul style="list-style-type: none"> • Non-recurring initiatives • Avoid creating new programs with ongoing commitment • Invest in critical infrastructure 	X
Sought Public Funding Requests [October 2021]	X
Ensured Compliance with U.S. Treasury Department Guidelines	X
Obtained Board of Commissioner Approval for ARPA Commitments	X
Provided Immediate Assistance to Residents	X
Funded Vital Projects within County and Community	X

2

2



ARPA Funds Summary [\$ in millions]

ARPA funds received		\$ 36.3
Commitments – phase 1	\$ 14.4	
Commitments – phase 2 [revised]	6.8	
Commitments – phase 3	3.8	
Commitments – phase 4	<u>10.7</u>	
Total Commitments		<u>35.7</u>
Uncommitted ARPA funds		\$ 0.6

3

3



ARPA Commitments [\$ in millions]

	Amount	Mental Health	Medical Facilities	Congregate Living Facilities	Aid to Sarpy Residents	Support Tourism Industry	Public Health	Public Safety	Infrastructure
New Correctional Center	\$ 13.0	X	X	X			X	X	
Sewer System Improvement	11.0								X
Road Project [60 th St.]	3.0								
Public Safety Vehicles, etc.	1.4							X	
Forensic Psychiatry Fellow.	1.2	X					X		
County Technology	1.2							X	X
Mental Health Initiatives	1.0	X					X		
Upgrade Siren System	1.0							X	X
Rent & Other Assistance [LU]	0.6				X		X		
Non-Profit Assistance [MCF]	0.5				X		X		
Fontenelle Forest	0.5					X			
Health Ins. COVID costs	0.5								
All Other	0.8					X	X	X	
TOTAL	\$ 35.7								

4

4



ARPA Commitments [\$ in millions]

	Amount	Mental Health	Medical Facilities	Congregate Living Facilities	Aid to Sarpy Residents	Support Tourism Industry	Public Health	Public Safety	Infrastructure
New Correctional Center	\$ 13.0	X	X	X			X	X	

- Covid-19 prevention in congregate settings:
 - Courtroom located in new correctional center
 - Video visitation facilities & technology
- Medical wing to provide health & dental services
- Improved ventilation systems and recreational areas
- Behavioral health wing to provide mental health services
- Reduced bonding for this facility, savings to property taxpayers

5

5



ARPA Commitments [\$ in millions]

	Amount	Mental Health	Medical Facilities	Congregate Living Facilities	Aid to Sarpy Residents	Support Tourism Industry	Public Health	Public Safety	Infrastructure
New Correctional Center	\$ 13.0	X	X	X			X	X	
Sewer System Improvement	11.0								X

- South Papio Creek Outfall parallel relief sewer
- Wood Hollow/Valley Ridge manhole access
- Westmont sewer inflow/infiltration control
- Sarpy County & Cities Wastewater Agency support (\$7m)

6

6



ARPA Commitments [\$ in millions]

	Amount	Mental Health	Medical Facilities	Congregate Living Facilities	Aid to Sarpy Residents	Support Tourism Industry	Public Health	Public Safety	Infrastructure
New Correctional Center	\$ 13.0	X	X	X			X	X	
Sewer System Improvement	11.0								X
Road Project [60 th St.]	3.0								

- To fund a key road project:
 - 60th Street, from HWY 370 to Capehart Road (project 13-02)
 - Enable the project to be completed in one phase & earlier

7

7



ARPA Commitments [\$ in millions]

	Amount	Mental Health	Medical Facilities	Congregate Living Facilities	Aid to Sarpy Residents	Support Tourism Industry	Public Health	Public Safety	Infrastructure
New Correctional Center	\$ 13.0	X	X	X			X	X	
Sewer System Improvement	11.0								X
Road Project [60 th St.]	3.0								
Public Safety Vehicles, etc.	1.4							X	

- Incident command/crisis negotiations unit vehicle
- Replacement of aging Sheriff vehicles
- Sheriff vehicle storage/covering improvements

8

8



ARPA Commitments [\$ in millions]

	Amount	Mental Health	Medical Facilities	Congregate Living Facilities	Aid to Sarpy Residents	Support Tourism Industry	Public Health	Public Safety	Infrastructure
New Correctional Center	\$ 13.0	X	X	X			X	X	
Sewer System Improvement	11.0								X
Road Project [60 th St.]	3.0								
Public Safety Vehicles, etc.	1.4							X	
Forensic Psychiatry Fellow.	1.2	X					X		

- Agreement with UNMC to provide mental health services

9

9



ARPA Commitments [\$ in millions]

	Amount	Mental Health	Medical Facilities	Congregate Living Facilities	Aid to Sarpy Residents	Support Tourism Industry	Public Health	Public Safety	Infrastructure
New Correctional Center	\$ 13.0	X	X	X			X	X	
Sewer System Improvement	11.0								X
Road Project [60 th St.]	3.0								
Public Safety Vehicles, etc.	1.4							X	
Forensic Psychiatry Fellow.	1.2	X					X		
County Technology	1.2							X	X
Mental Health Initiatives	1.0	X					X		
Upgrade Siren System	1.0							X	X

- Modifications to emergency warning sirens, county-wide
- Enable two-way communication
- Allow for sounding specific sirens (all or none now)

10

10



ARPA Commitments [\$ in millions]

	Amount	Mental Health	Medical Facilities	Congregate Living Facilities	Aid to Sarpy Residents	Support Tourism Industry	Public Health	Public Safety	Infrastructure
New Correctional Center	\$ 13.0	X	X	X			X	X	
Sewer System Improvement	11.0								X
Road Project [60 th St.]	3.0								
Public Safety Vehicles, etc.	1.4							X	
Forensic Psychiatry Fellow.	1.2	X					X		
County Technology	1.2							X	X
Mental Health Initiatives	1.0	X					X		
Upgrade Siren System	1.0							X	X
Rent & Other Assistance [LU]	0.6				X		X		
Non-Profit Assistance [MCF]	0.5				X		X		

- Rent & other assistance to residents via Lift-Up Sarpy
 - First dollars spent to provide immediate help
- Support to area non-profit organizations via MCF

11

11



ARPA Commitments [\$ in millions]

	Amount	Mental Health	Medical Facilities	Congregate Living Facilities	Aid to Sarpy Residents	Support Tourism Industry	Public Health	Public Safety	Infrastructure
New Correctional Center	\$ 13.0	X	X	X			X	X	
Sewer System Improvement	11.0								X
Road Project [60 th St.]	3.0								
Public Safety Vehicles, etc.	1.4							X	
Forensic Psychiatry Fellow.	1.2	X					X		
County Technology	1.2							X	X
Mental Health Initiatives	1.0	X					X		
Upgrade Siren System	1.0							X	X
Rent & Other Assistance [LU]	0.6				X		X		
Non-Profit Assistance [MCF]	0.5				X		X		
Fontenelle Forest	0.5					X			

- Repairs to Camp Brewster & Krim, Brewster & Wakonda Houses

12

12



ARPA Commitments [\$ in millions]

	Amount	Mental Health	Medical Facilities	Congregate Living Facilities	Aid to Sarpy Residents	Support Tourism Industry	Public Health	Public Safety	Infrastructure
New Correctional Center	\$ 13.0	X	X	X			X	X	
Sewer System Improvement	11.0								X
Road Project [60 th St.]	3.0								
Public Safety Vehicles, etc.	1.4							X	
Forensic Psychiatry Fellow.	1.2	X					X		
County Technology	1.2							X	X
Mental Health Initiatives	1.0	X					X		
Upgrade Siren System	1.0							X	X
Rent & Other Assistance [LU]	0.6				X		X		
Non-Profit Assistance [MCF]	0.5				X		X		
Fontenelle Forest	0.5					X			
Health Ins. COVID costs	0.5								
All Other	0.8					X	X	X	

- Pagers for Springfield and Gretna VFD for new system
- Equipment for Sarpy/Cass Health Department

13

13



ARPA Commitments [\$ in millions]

	Amount	Mental Health	Medical Facilities	Congregate Living Facilities	Aid to Sarpy Residents	Support Tourism Industry	Public Health	Public Safety	Infrastructure
New Correctional Center	\$ 13.0	X	X	X			X	X	
Sewer System Improvement	11.0								X
Road Project [60 th St.]	3.0								
Public Safety Vehicles, etc.	1.4							X	
Forensic Psychiatry Fellow.	1.2	X					X		
County Technology	1.2							X	X
Mental Health Initiatives	1.0	X					X		
Upgrade Siren System	1.0							X	X
Rent & Other Assistance [LU]	0.6				X		X		
Non-Profit Assistance [MCF]	0.5				X		X		
Fontenelle Forest	0.5					X			
Health Ins. COVID costs	0.5								
All Other	0.8					X	X	X	
TOTAL	\$ 35.7								

14

14